



Children Ever in Care

Terry V. Shaw, PhD
Joseph Magruder, MSW

University of California, Berkeley
School of Social Welfare

This research is funded by the California Department
of Social Services and the Stuart Foundation

Presented at the 11th Annual Society for Social Work Research
(SSWR) Workshop on January 14, 2007

Problem

- What does administrative data tell us about lifetime incidence of child welfare system involvement?
- What are the differences between using birth cohorts and synthetic cohorts?



Cohorts

- California's Administrative Data Base - the Child Welfare Services Case Management System (CWS/CMS) has been operational long enough to allow analysis of lifetime in-home child welfare services and foster care utilization for a cohort of six year old children.
- The cohort includes all children, not just those with child welfare involvement.





Birth Cohort

- Denominator = Vital Statistics Birth Records
- Consideration of ethnicity based on mother to match birth records
- CWS/CMS birthplace data are incomplete so it is not possible to accurately limit cases in the numerator to children born in the state



Lifetable (Synthetic Cohort)

- A created or hypothetical cohort of children based on data from one year that is set up as though they relate to a single cohort.
- For this example all children ages 0 up to age 6 for a given year are examined and the rates for each age/ethnic group is used to calculate an overall rate of penetration into the child welfare system.

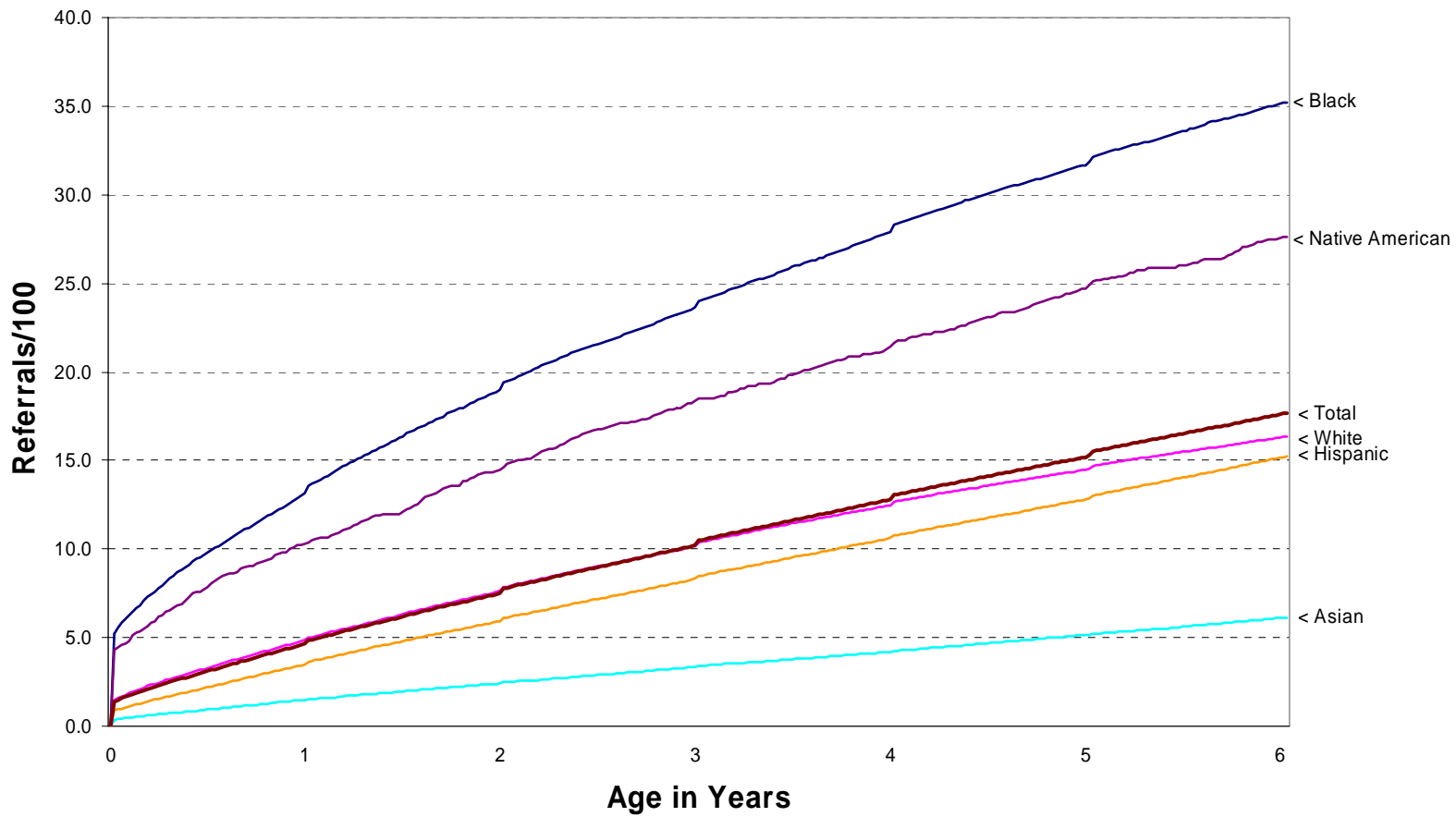
Child Welfare Service Incidence History for California Children born in 1999

	Black	White	Hispanic	Asian	Native American	Total
Births	34,136	175,137	249,253	57,046	2,501	518,073
At least one CW Referral before age 6	12,027	28,640	37,891	3,504	691	91,577
<i>Incidence per 100, 1999 births</i>	35.2	16.4	15.2	6.1	27.6	17.7
At least one Substantiated CW Referral before age 6.	4,560	10,807	12,859	1,156	335	30,656
<i>Incidence per 100, 1999 births</i>	13.4	6.2	5.2	2.0	13.4	5.9
At least one removal in the first 6 years.	3,033	5,622	6,042	511	208	15,490
<i>Incidence per 100, 1999 births</i>	8.9	3.2	2.4	0.9	8.3	3.0
% of referred with substantiation	37.91	37.73	33.94	32.99	48.48	33.48
% of referred entering care	25.22	19.63	15.95	14.58	30.10	16.91
% of substantiated entering care	66.51	52.02	46.99	44.20	62.09	50.53



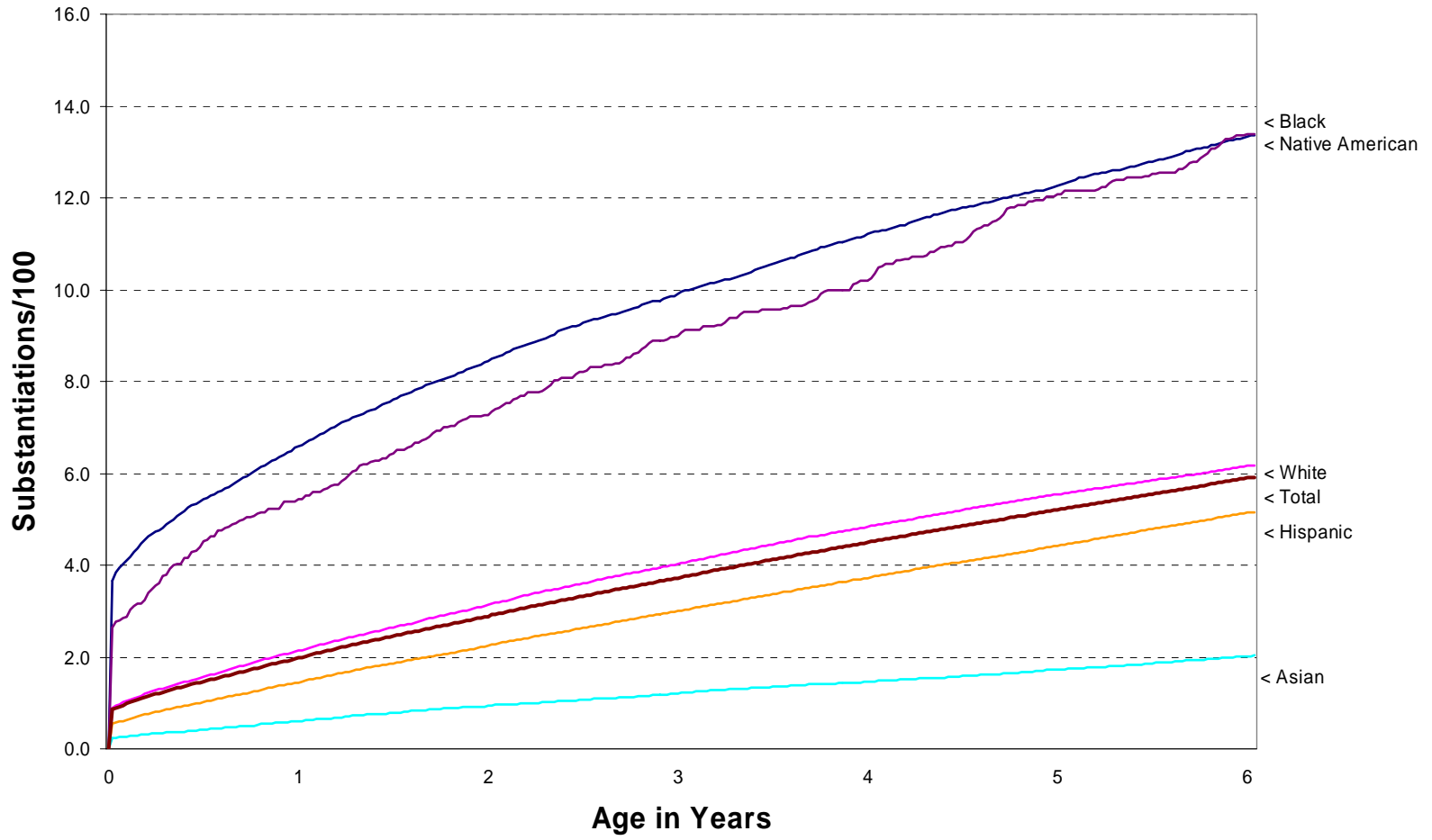


Initial Referral Rates - Births in 1999



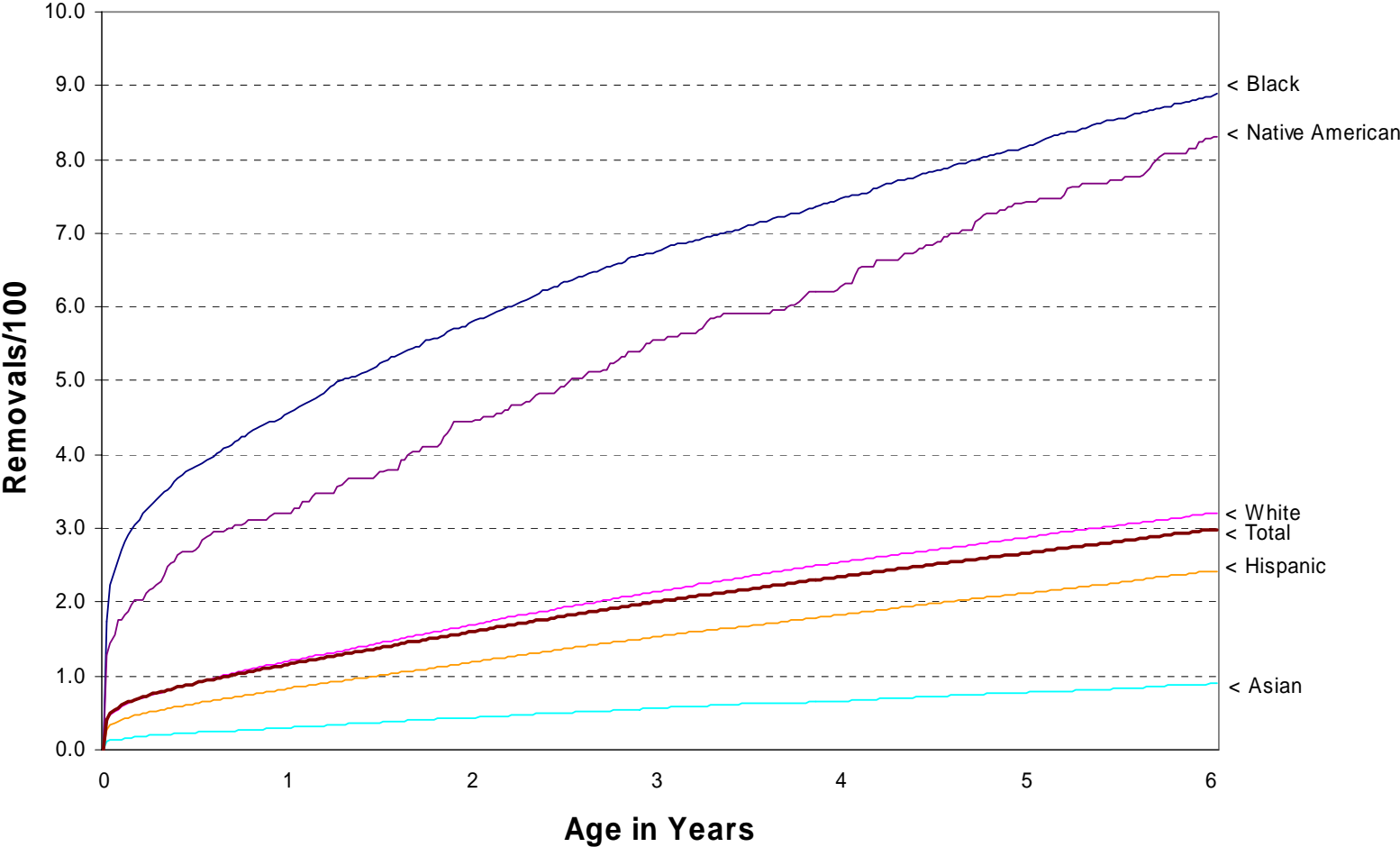


Initial Substantiation Rates - Births in 1999



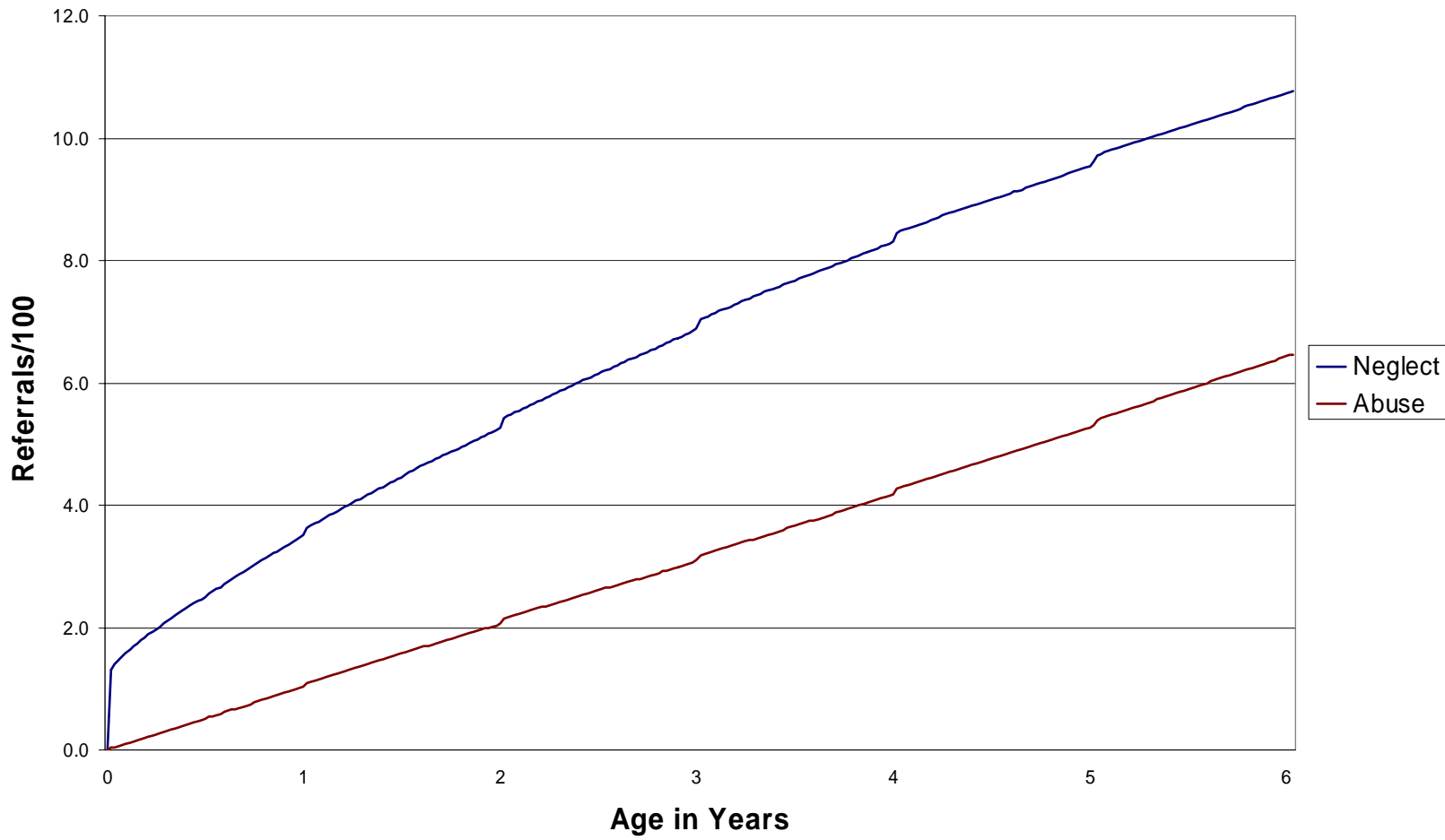


Initial Removal Rates - Births in 1999



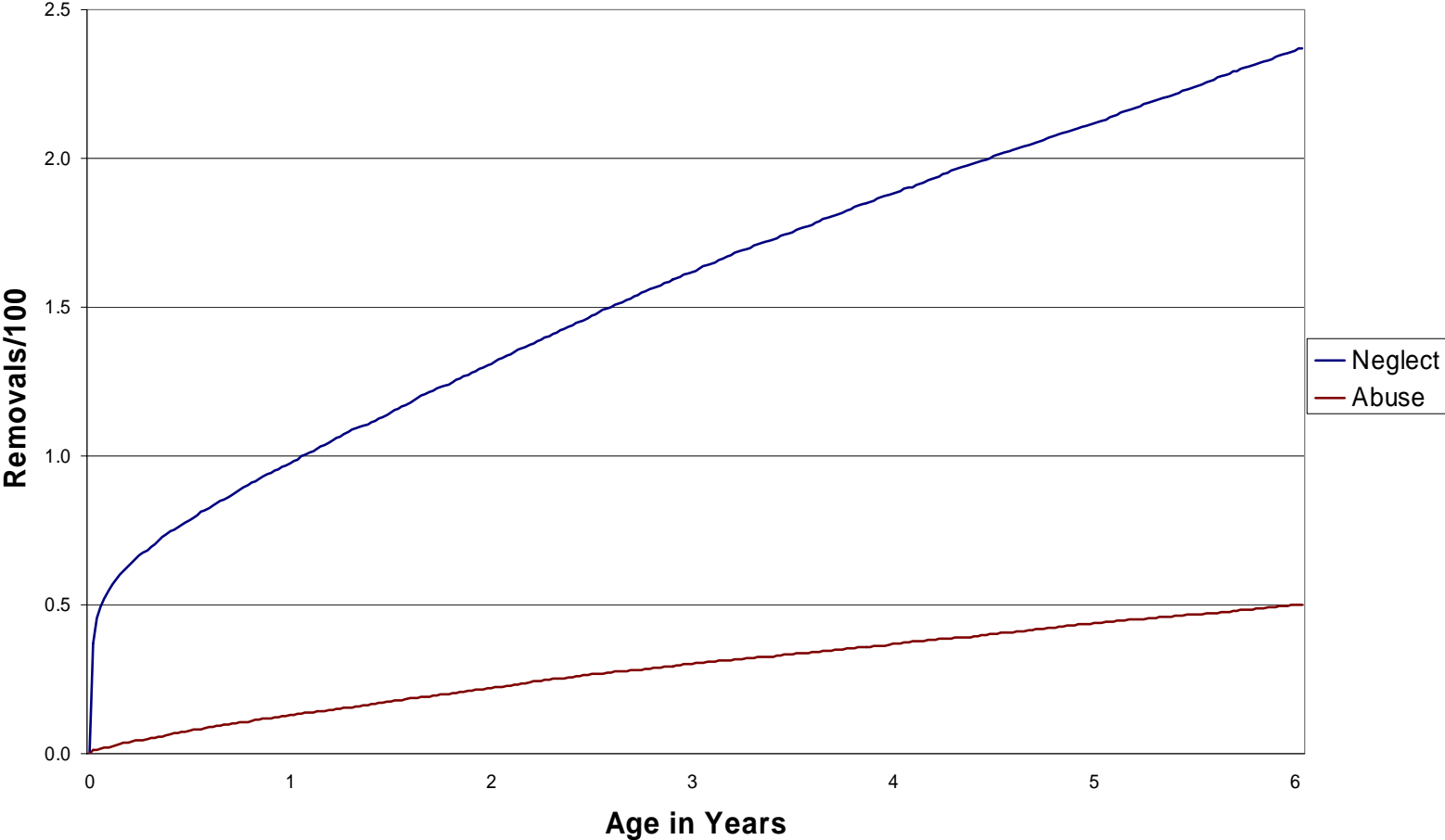


Referral Rates by Type - Births in 1999



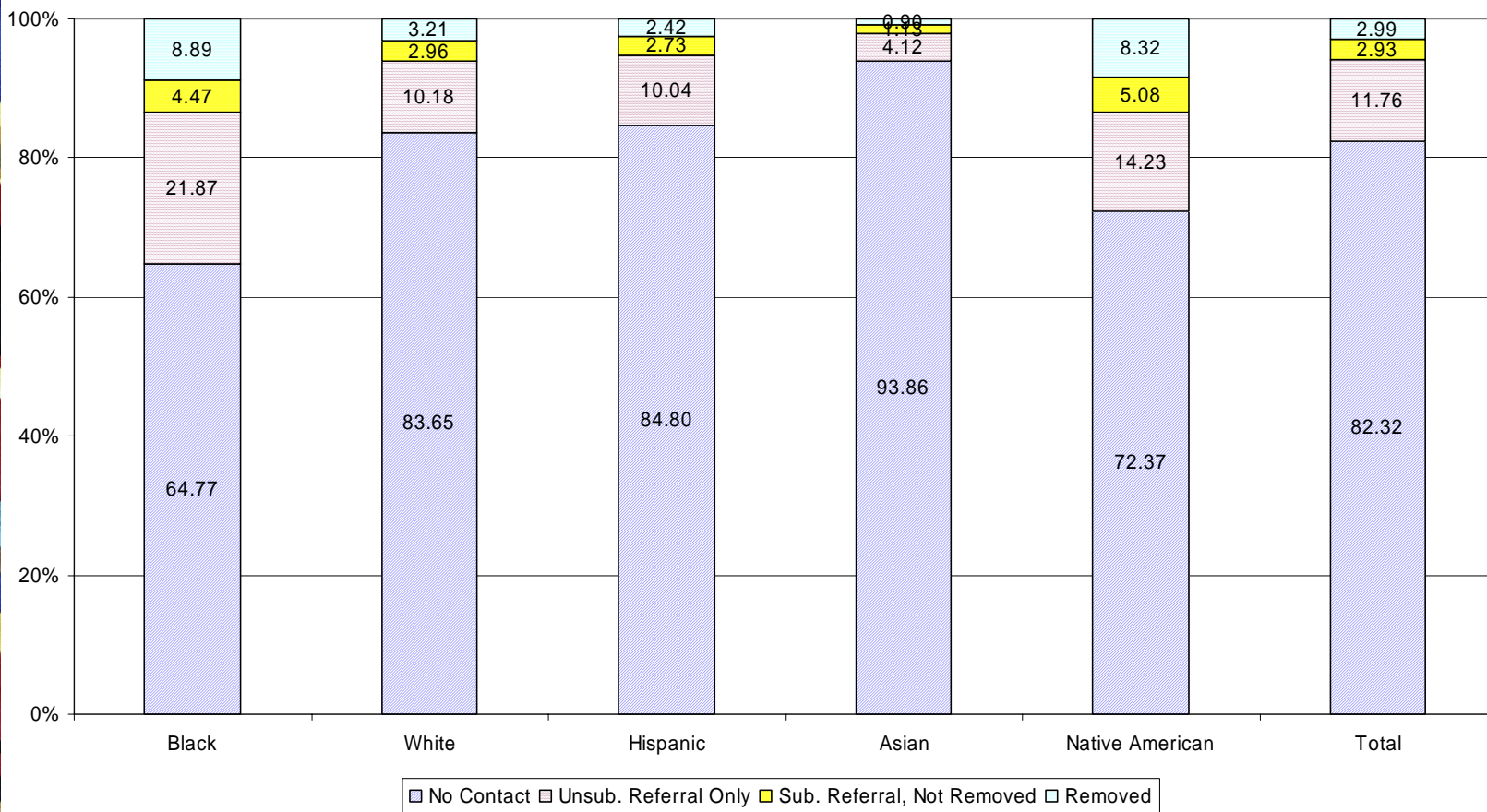


Removal Rates by Type - Births in 1999






CWS Involvement Before Age 6



Synthetic Cohort

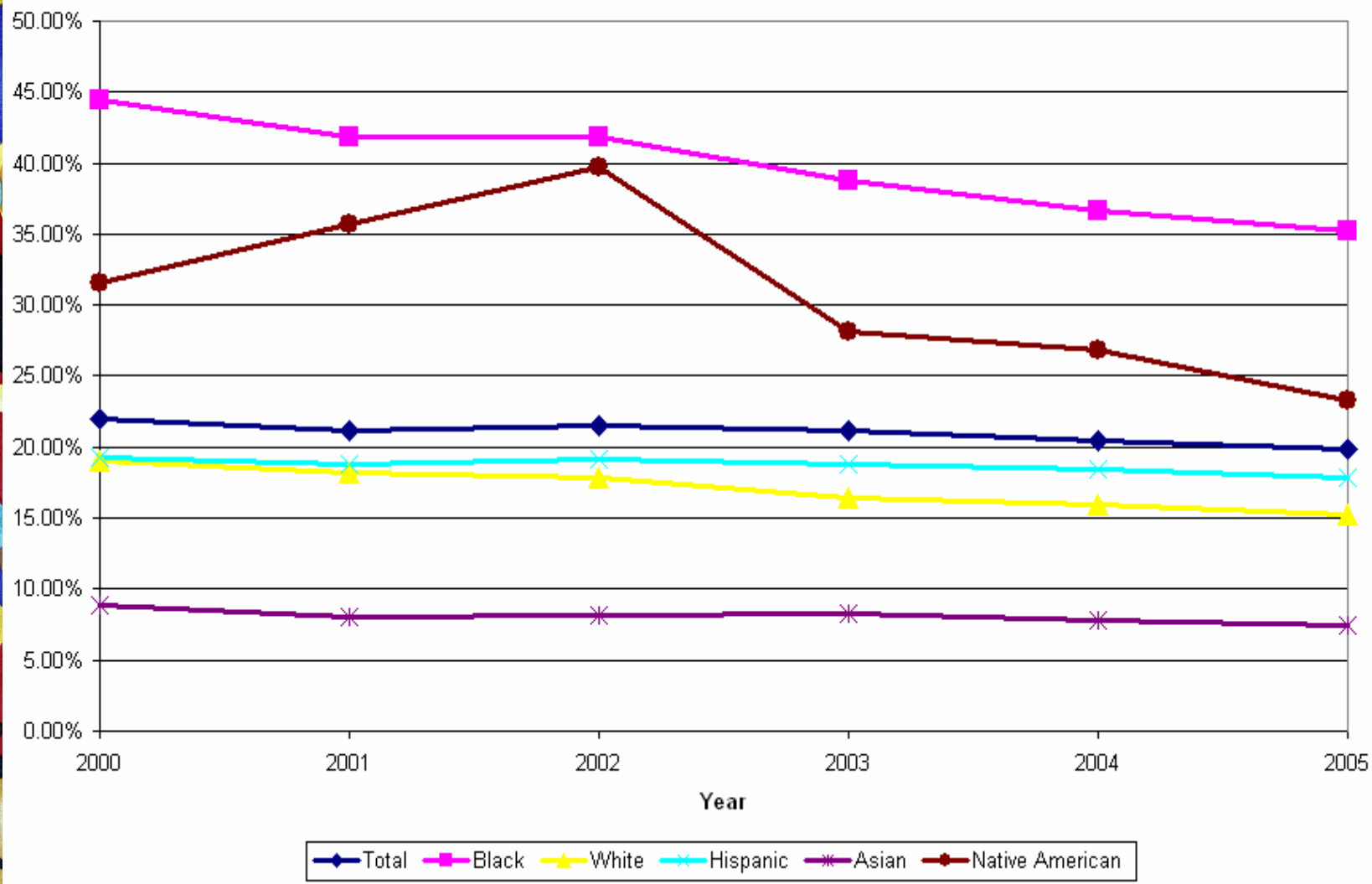
First Referrals before age 6

– by year



Referrals	Black	White	Hispanic	Asian	Native American	Total
2000	44.5	19.0	19.3	8.9	31.6	22.0
2001	41.9	18.2	18.8	8.0	35.7	21.2
2002	41.8	17.9	19.1	8.1	39.7	21.5
2003	38.8	16.4	18.8	8.3	28.1	21.1
2004	36.7	15.9	18.4	7.8	26.8	20.5
2005	35.2	15.2	17.9	7.5	23.3	19.9

Lifetable Percent of Children Referred into the foster care system
Synthetic cohort of children 0 to 6, 2000 through 2006



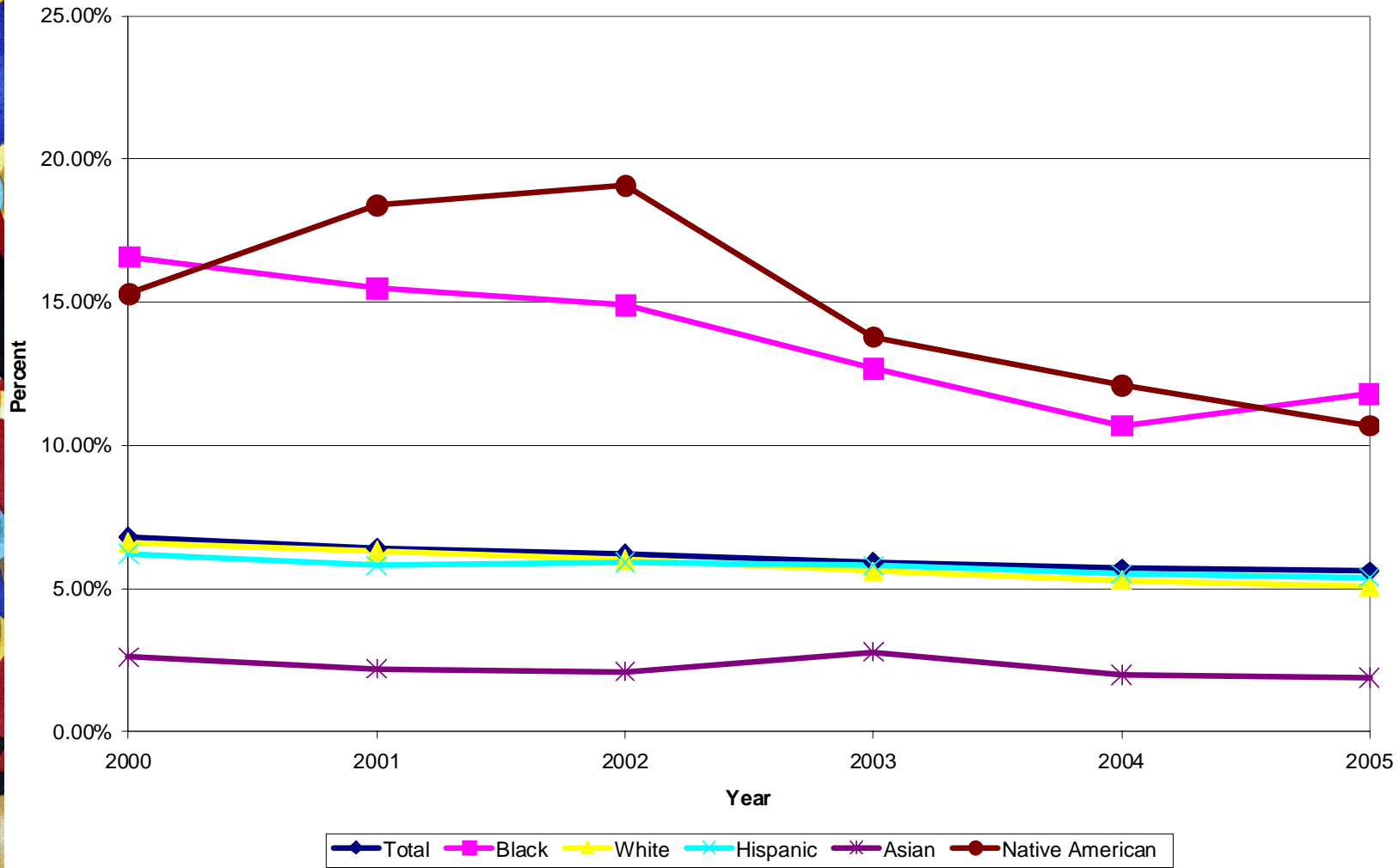



Synthetic Cohort First Substantiated Referrals before age 6 – by year

Sub. Referrals	Black	White	Hispanic	Asian	Native American	Total
2000	16.6	6.6	6.2	2.6	15.3	6.8
2001	15.5	6.3	5.8	2.2	18.4	6.4
2002	14.9	6.0	5.9	2.1	19.1	6.2
2003	12.7	5.6	5.6	2.2	13.8	5.9
2004	12.0	5.3	5.5	2.0	12.1	5.7
2005	11.8	5.1	5.4	1.9	10.7	5.6



Substantiated Allegations in the Child Welfare System - Synthetic Cohort of children 0 to 6





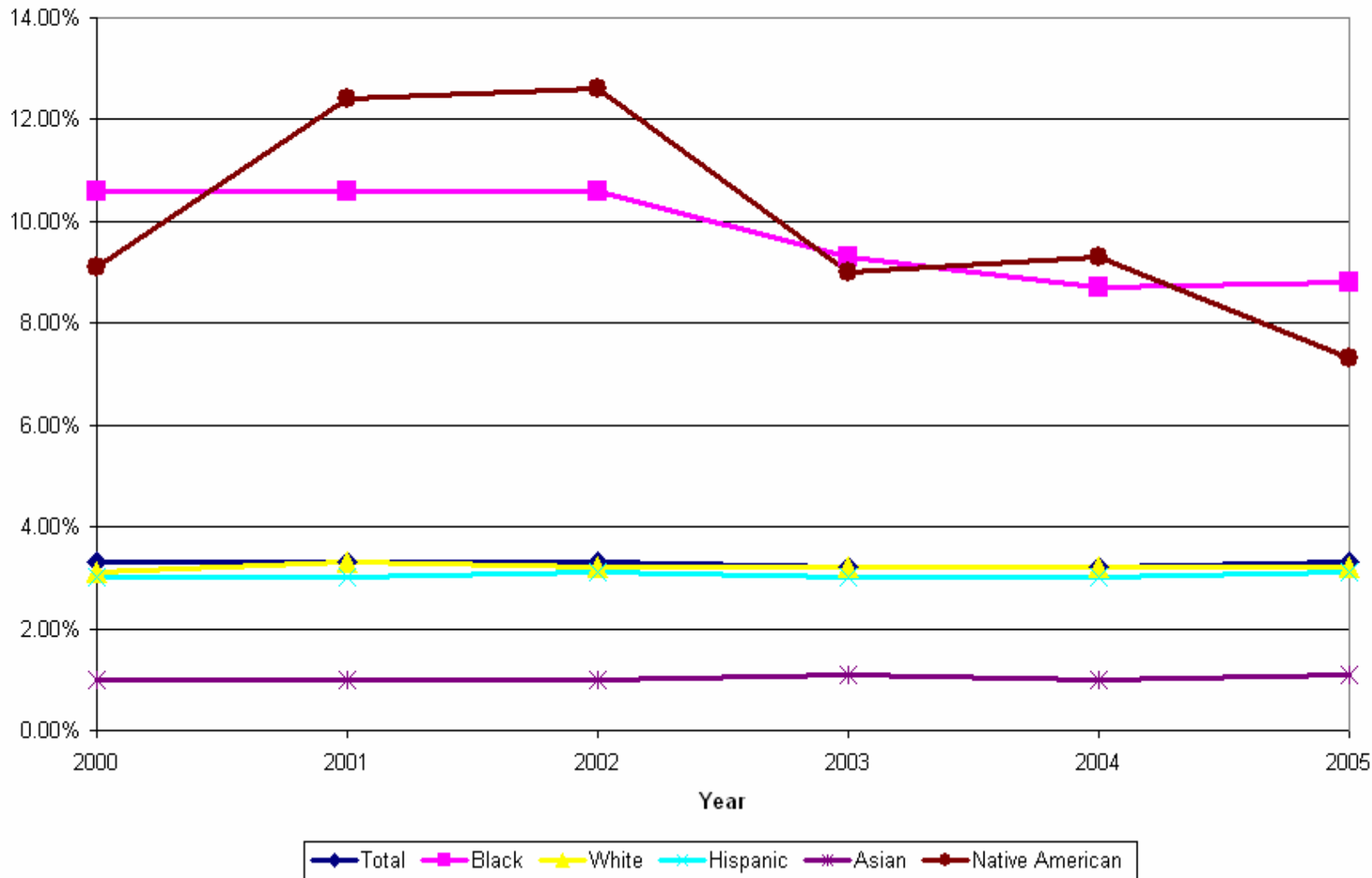
Synthetic Cohort

First Removals before age 6

– by year

Entries	Black	White	Hispanic	Asian	Native American	Total
2000	10.6	3.1	3.0	1.0	9.1	3.3
2001	10.6	3.3	3.0	1.0	12.4	3.3
2002	10.6	3.2	3.1	1.0	12.6	3.3
2003	9.3	3.2	3.0	1.1	9.0	3.2
2004	8.7	3.2	3.0	1.0	9.3	3.2
2005	8.8	3.2	3.1	1.1	7.3	3.3

Lifetable Percent of Children Entering the foster care system
Synthetic cohort of children 0 to 6, 2000 through 2006



Child Welfare Service Incidence History for California Children born in 1999 Compared with Synthetic Cohorts

At least one CW Referral before age 6	Black	White	Hispanic	Asian	Native American	Total
<i>Incidence per 100, 1999 births</i>	35.2	16.4	15.2	6.1	27.6	17.7
<i>Incidence per 100, 2000 Synthetic</i>	39.3	16.1	16.3	7.2	28.2	18.7
<i>Incidence per 100, 2005 Synthetic</i>	31.7	13.3	15.2	6.2	21.8	17.2
At least one Substantiated CW Referral before age 6.						
<i>Incidence per 100, 1999 births</i>	13.4	6.2	5.2	2.0	13.4	5.9
<i>Incidence per 100, 2000 Synthetic</i>	14.7	5.6	5.2	2.2	13.8	5.8
<i>Incidence per 100, 2005 Synthetic</i>	10.6	4.5	4.6	1.6	9.7	4.9
At least one removal in the first 6 years.						
<i>Incidence per 100, 1999 births</i>	8.9	3.2	2.4	0.9	8.3	3.0
<i>Incidence per 100, 2000 Synthetic</i>	9.8	2.8	2.6	0.9	8.4	3.0
<i>Incidence per 100, 2005 Synthetic</i>	8.0	2.9	2.8	1.0	6.7	3.0





Lifetable – pros and cons

- Can be used on the local level to produce an estimate of the overall incidence rate of penetration into the child welfare system.
- Allows an examination by age and ethnicity.
- The incidence rates are estimates and can not, by themselves, show trends in the penetration rates.
- Highly sensitive to changes in policy.



Next Steps

- During the next several years we will be able to analyze how cohort incidence for successive cohorts of children, including changes in disproportionality.
- We intend on studying the lifetime incidence of types of abuse and neglect.
- In 13 years, it will be possible to study referral incidence throughout the childhood of the cohort born in 1999.



The End!

Center for Social Services Research Web Page

<http://cssr.berkeley.edu/CWSCMSReports>

Joseph Magruder – joemagruder@berkeley.edu

Terry V. Shaw – tvshaw@berkeley.edu

(510) 643 - 2585